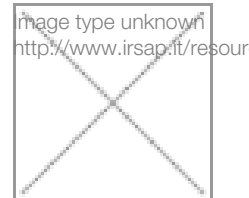


Xilo 2



Xilo2 cu cele două surori de lemn sudate pe laturile colectoarelor, este soluția ideală pentru situațiile care necesită un randament termic sporit. Disponibil în 4 variante de înălțime, cu lățimea de la 456 mm la 756 mm. Multumită rezistenței electrice (disponibilă opțional), poate funcționa chiar și atunci când instalația de încălzire este oprită.



Xilo 2, înălțimea 1744 mm, lățime 506 mm, Alb Standard

Caracteristici Tehnice

calorifer port prosop din oțel cu elemente orizontale din profile plate 50x10 mm

colectoare lateral cu secțiune circulară și diametrul de 30 mm

filetarea extremității colectorului de 1/2" Gas drept

presiunea maximă admisă de 4 bar

temperatura maximă admisă de 95°C

Standard equipment

4 chela pentru instalare
aerisitor

Certifications



Plus



Date tecniche

| Model | Deph (mm) | Height (mm) | Width (mm) | Conn. C. (mm) | Weigth (kg) | Capacity (lt) | $\Delta t=60^{\circ}\text{C}$ (Watt) | $\Delta t=50^{\circ}\text{C}$ (Watt) | $\Delta t=40^{\circ}\text{C}$ (Watt) | $\Delta t=30^{\circ}\text{C}$ (Watt) | $\Delta t=20^{\circ}\text{C}$ (Watt) | Exponent | mixed oper. (Watt) |
|---------------------------|-----------|-------------|------------|---------------|-------------|---------------|--------------------------------------|--------------------------------------|--------------------------------------|--------------------------------------|--------------------------------------|----------|--------------------|
| 792 22 tubi 2 intervalli | 46,0 | 792 | 456 | 406 | 11,40 | 4,40 | 662,0 | 533,0 | 409,0 | 290,0 | 179,0 | 1,192 | 400 |
| 792 22 tubi 2 intervalli | 46,0 | 792 | 506 | 456 | 12,50 | 4,80 | 723,0 | 582,0 | 446,0 | 317,0 | 196,0 | 1,189 | 400 |
| 792 22 tubi 2 intervalli | 46,0 | 792 | 556 | 506 | 13,60 | 5,20 | 783,0 | 631,0 | 484,0 | 344,0 | 213,0 | 1,186 | 400 |
| 792 22 tubi 2 intervalli | 46,0 | 792 | 606 | 556 | 14,70 | 5,60 | 844,0 | 680,0 | 522,0 | 371,0 | 230,0 | 1,184 | 700 |
| 792 22 tubi 2 intervalli | 46,0 | 792 | 756 | 706 | 18,00 | 6,80 | 1.024,0 | 827,0 | 636,0 | 454,0 | 282,0 | 1,175 | 700 |
| 1156 32 tubi 3 intervalli | 46,0 | 1156 | 456 | 406 | 16,60 | 6,50 | 902,0 | 725,0 | 555,0 | 393,0 | 242,0 | 1,198 | 700 |
| 1156 32 tubi 3 intervalli | 46,0 | 1156 | 506 | 456 | 18,20 | 7,00 | 987,0 | 794,0 | 608,0 | 431,0 | 266,0 | 1,195 | 700 |
| 1156 32 tubi 3 intervalli | 46,0 | 1156 | 556 | 506 | 19,80 | 7,60 | 1.072,0 | 863,0 | 661,0 | 470,0 | 290,0 | 1,191 | 700 |
| 1156 32 tubi 3 intervalli | 46,0 | 1156 | 606 | 556 | 21,40 | 8,20 | 1.157,0 | 932,0 | 715,0 | 508,0 | 314,0 | 1,187 | 1000 |
| 1156 32 tubi 3 intervalli | 46,0 | 1156 | 756 | 706 | 26,20 | 9,80 | 1.411,0 | 1.138,0 | 875,0 | 624,0 | 387,0 | 1,177 | 1000 |
| 1520 42 tubi 4 intervalli | 46,0 | 1520 | 456 | 406 | 21,80 | 8,50 | 1.121,0 | 891,0 | 673,0 | 468,0 | 281,0 | 1,259 | 700 |
| 1520 42 tubi 4 intervalli | 46,0 | 1520 | 506 | 456 | 23,90 | 9,20 | 1.225,0 | 976,0 | 739,0 | 516,0 | 311,0 | 1,247 | 1000 |
| 1520 42 tubi 4 intervalli | 46,0 | 1520 | 556 | 506 | 26,00 | 10,00 | 1.329,0 | 1.061,0 | 805,0 | 565,0 | 342,0 | 1,234 | 1000 |
| 1520 42 tubi 4 intervalli | 46,0 | 1520 | 606 | 556 | 28,10 | 10,70 | 1.432,0 | 1.146,0 | 872,0 | 614,0 | 374,0 | 1,222 | 1000 |
| 1520 42 tubi 4 intervalli | 46,0 | 1520 | 756 | 706 | 34,40 | 12,90 | 1.738,0 | 1.400,0 | 1.075,0 | 765,0 | 473,0 | 1,184 | 1000 |
| 1744 50 tubi 4 intervalli | 46,0 | 1744 | 456 | 406 | 25,80 | 10,00 | 1.245,0 | 992,0 | 750,0 | 524,0 | 315,0 | 1,250 | 1000 |

| | | | | | | | | | | | | | |
|------------------------------|------|------|-----|-----|-------|-------|---------|---------|---------|-------|-------|-------|------|
| 1744 50 tubi 4 intervalli | 46,0 | 1744 | 506 | 456 | 28,30 | 10,90 | 1.372,0 | 1.094,0 | 830,0 | 581,0 | 351,0 | 1,240 | 1000 |
| 1744 50 tubi 4 intervalli | 46,0 | 1744 | 556 | 506 | 30,80 | 11,80 | 1.498,0 | 1.197,0 | 910,0 | 638,0 | 388,0 | 1,231 | 1000 |
| 1744 50 tubi 4 intervalli | 46,0 | 1744 | 606 | 556 | 33,30 | 12,70 | 1.624,0 | 1.300,0 | 990,0 | 697,0 | 425,0 | 1,221 | 1000 |
| 1744 50 tubi 4 intervalli | 46,0 | 1744 | 756 | 706 | 40,80 | 15,30 | 1.999,0 | 1.608,0 | 1.233,0 | 875,0 | 539,0 | 1,193 | 1000 |

(*) Grație prestațiilor ridicate ale corpurilor încălzitoare Irsap Xilo2, se consideră ideale pentru proiectarea la joasă temperatură un Δt la 30°C

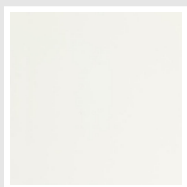
Pentru $\Delta t \neq$ de 60°C utilizați formula: $Q=Q_n (\Delta t / 60)^n$

Standard equipment

- 4 chela pentru instalare
- aerisitor

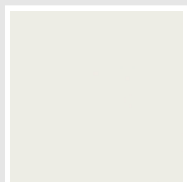
Colori e finisaje

STANDARD

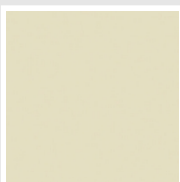


Bianco Standard
Cod. 01

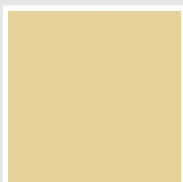
CLASSIC



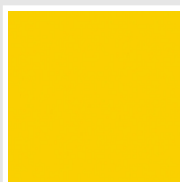
Bianco Edelweiss
Cod. 34



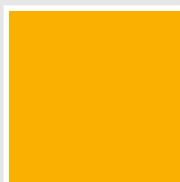
Avorio - RAL 1013
Cod. 02



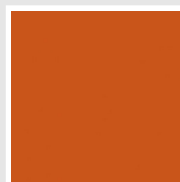
Beige Cream
Cod. 26



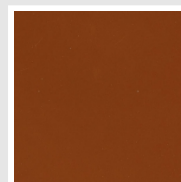
Giallo - RAL 1021
Cod. 04



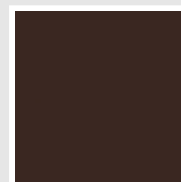
Giallo Melone - RAL
1028
Cod. E7



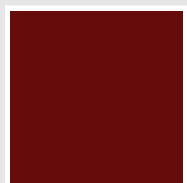
Arancio - RAL 2004
Cod. 17



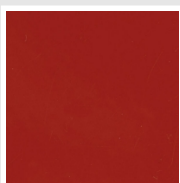
Marrone Ruggine -
RAL 8004
Cod. E1



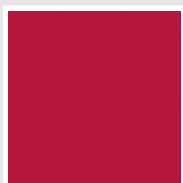
Marrone - RAL 8017
Cod. 09



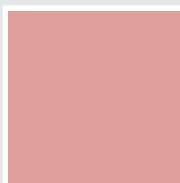
Amaranto - RAL 3003
Cod. 06



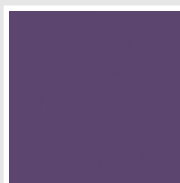
Rosso - RAL 3000
Cod. 05



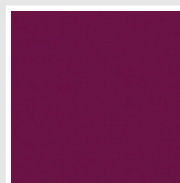
Rosso Fragola - RAL
3018
Cod. Y3



Rosa - RAL 3015
Cod. R2



Lilla Bluastro - RAL
4005
Cod. R3



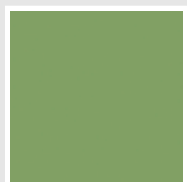
Porpora Traffico -
RAL 4006
Cod. R6



Verde Bosco - RAL
6005
Cod. 19



Verde Erba - RAL
6018
Cod. N3



Verde Salvia - RAL
6021
Cod. E6



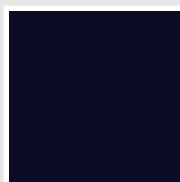
Blu Pastello - RAL
5024
Cod. G7



Grigio Manhattan
Cod. 03

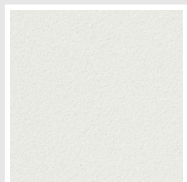


Nero - RAL 9005
Cod. 10

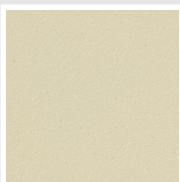


Deep Blue
Cod. 2F

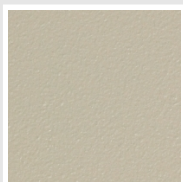
SPECIAL



Bianco Perla
Cod. 16



Quartz 1
Cod. 1C



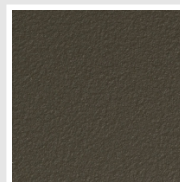
Sablé
Cod. Y4



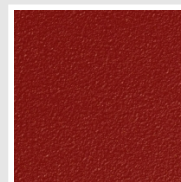
Quartz 2
Cod. 2C



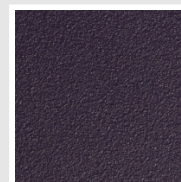
Sunstone
Cod. 2D



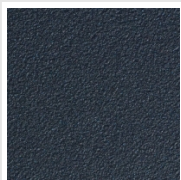
Bruno Tabacco
Cod. 1B



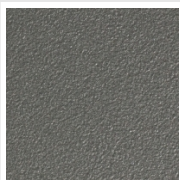
Flame Red
Cod. 7D



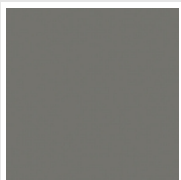
Purple Blue
Cod. 1D



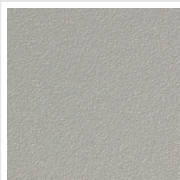
Azurite 3
Cod. 6C



Grigio Medio
Cod. 4D



Grigio Titanio
Metallizzato - RAL
9023
Cod. L3



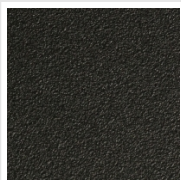
Grigio Perla
Cod. L6



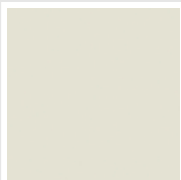
Nero Grafite
Cod. 18



Grigio Quarzo
Cod. 31



Nero Satinato
Cod. 30



Bianco Opaco
Cod. J8



Nero Opaco
Cod. K1



Agave
Cod. 9N



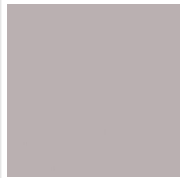
Blu Baltico
Cod. 1P



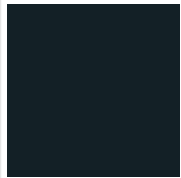
Ghiaccio
Cod. 3P



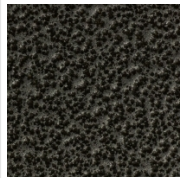
Blu Colomba
Opaco - RAL 5014
Cod. 4P



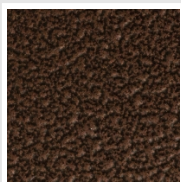
Grigio Chiaro Opaco
Cod. 8N



Grigio Cenere - Ral
7021
Cod. G1



Grigio Martellato
Cod. 32



Rame Martellato
Cod. J4

RAL



Other RAL Colours (following feasibility study)
Cod. ALTRIRAL

The Colors used in this folder are not considered binding. The different technological painting processes and the materials used for the realization can not have a perfect color match with the delivered product. Irsap company reserves the right to introduce at any time whatever modifications necessary to the improvement of the product.