

Ellipsis_H 2

image type unknown
<http://www.irsap.it/resour>



Ellipsis H 2, orizontal, înălțimea 480 mm, lățime 1820 mm, Agave

Caracteristici Tehnice

colectoare cu secțiunea circulară cu diametrul de 30 mm
elemente de oțel cu secțiune eliptică 50x25 mm
filetarea extremității colectorului 1/2" G dx
presiunea maximă admisă de 4 bar
temperatura maximă admisă de 95°C

Standard equipment

kit "chela" pentru fixare pe perete dotate cu șuruburi și dibluri;
dop de 1/2"
elemente de acoperire
aerisitor 1/2" cromat

Certifications



Plus



Date tehnice

Model	Depth (mm)	Length (mm)	Conn. C. (mm)	Weight (kg)	Capacity (lt)
520	76,0	520	470	1,34	0,94
650	76,0	650	600	1,60	1,16
700	76,0	700	650	1,70	1,25
920	76,0	920	870	2,15	1,62
1020	76,0	1020	970	2,35	1,79
1220	76,0	1220	1170	2,75	2,12
1520	76,0	1520	1470	3,35	2,63
1820	76,0	1820	1770	3,95	3,14
2020	76,0	2020	1970	4,35	3,48

Grație prestațiilor ridicate ale corpurilor încălzitoare Irsap Ellipsis_H 2 Orizontal, se consideră ideale pentru proiectarea la joasă temperatură un Δt la 30°C

Pentru $\Delta t \neq$ de 60°C utilizați formula: $Q=Q_n (\Delta t / 60)^n$

Standard equipment

- kit "chela" pentru fixare pe perete dotate cu șuruburi și dibluri;
- dop de 1/2"
- elemente de acoperire
- aerisitor 1/2" cromat

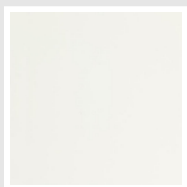
Number elements	4	6	8	10	12	14	16	18	20	22	24	26	28	30
Thermal Power linear mt. Watt a $\Delta t=60^\circ\text{C}$	672,0	1.003,1	1.328,0	1.650,3	1.970,3	2.285,1	2.596,2	2.903,8	3.208,0	3.508,9	3.806,7	4.101,4	4.392,9	4.681,6
Thermal Power linear mt. Watt a $\Delta t=50^\circ\text{C}$	531,0	794,6	1.055,1	1.315,1	1.574,9	1.831,9	2.087,5	2.341,6	2.594,3	2.845,7	3.095,8	3.344,6	3.592,1	3.838,4
Thermal Power linear mt. Watt a $\Delta t=40^\circ\text{C}$	398,0	597,5	796,2	996,1	1.197,2	1.397,7	1.598,5	1.799,4	2.000,6	2.202,1	2.403,8	2.605,7	2.807,8	3.010,2
Thermal Power linear mt. Watt a $\Delta t=30^\circ\text{C}$	274,5	413,7	553,8	696,2	840,8	986,2	1.133,0	1.281,3	1.431,0	1.582,2	1.734,7	1.888,7	2.043,9	2.200,5
Thermal Power linear mt. Watt a $\Delta t=20^\circ\text{C}$	162,6	246,4	332,0	420,2	510,9	603,2	697,6	794,0	892,4	992,9	1.095,4	1.199,9	1.306,4	1.414,9
Exponent	1,292	1,278	1,262	1,245	1,229	1,212	1,196	1,180	1,165	1,149	1,134	1,119	1,104	1,089

Data Set

Height (mm) sub>	NÂ° Elements		520	650	700	920	1020	1220	1520	1820	2020
240	4	Watt =	276	345	372	489	542	648	807	966	1073
360	6	Watt =	413	516	556	731	810	969	1208	1446	1605
480	8	Watt =	549	686	739	971	1076	1287	1604	1920	2131
600	10	Watt =	684	855	921	1210	1341	1604	1999	2393	2657
720	12	Watt =	819	1024	1102	1449	1606	1921	2394	2866	3181
840	14	Watt =	953	1191	1282	1685	1869	2235	2784	3334	3700
960	16	Watt =	1086	1357	1461	1920	2129	2547	3173	3799	
1080	18	Watt =	1218	1522	1639	2154	2388	2857	3559		
1200	20	Watt =	1349	1686	1816	2387	2646	3165	3943		
1320	22	Watt =	1480	1850	1992	2618	2903	3472			
1440	24	Watt =	1610	2012	2167	2848	3158	3777			
1560	26	Watt =	1739	2174	2341	3077	3411				
1680	28	Watt =	1868	2335	2514	3305	3664				
1800	30	Watt =	1996	2495	2687	3531					

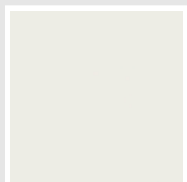
Colori e finisaje

STANDARD



Bianco Standard
Cod. 01

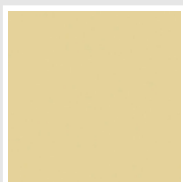
CLASSIC



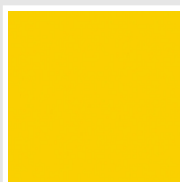
Bianco Edelweiss
Cod. 34



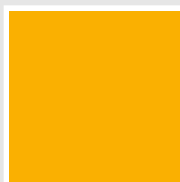
Avorio - RAL 1013
Cod. 02



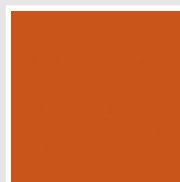
Beige Cream
Cod. 26



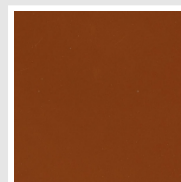
Giallo - RAL 1021
Cod. 04



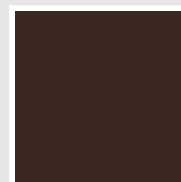
Giallo Melone - RAL
1028
Cod. E7



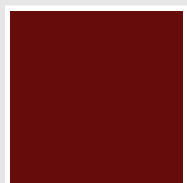
Arancio - RAL 2004
Cod. 17



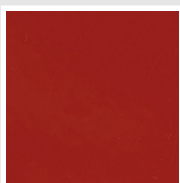
Marrone Ruggine -
RAL 8004
Cod. E1



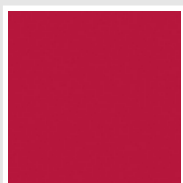
Marrone - RAL 8017
Cod. 09



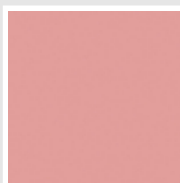
Amaranto - RAL 3003
Cod. 06



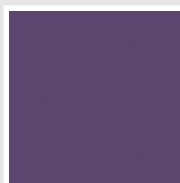
Rosso - RAL 3000
Cod. 05



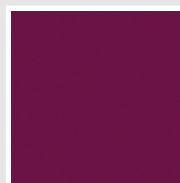
Rosso Fragola - RAL
3018
Cod. Y3



Rosa - RAL 3015
Cod. R2



Lilla Bluastro - RAL
4005
Cod. R3



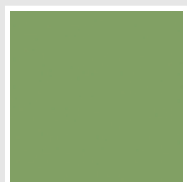
Porpora Traffico -
RAL 4006
Cod. R6



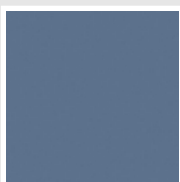
Verde Bosco - RAL
6005
Cod. 19



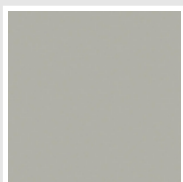
Verde Erba - RAL
6018
Cod. N3



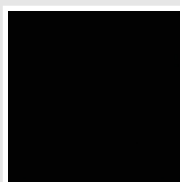
Verde Salvia - RAL
6021
Cod. E6



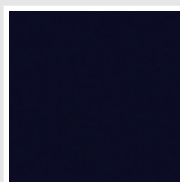
Blu Pastello - RAL
5024
Cod. G7



Grigio Manhattan
Cod. 03

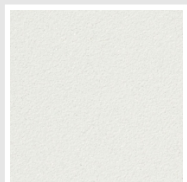


Nero - RAL 9005
Cod. 10

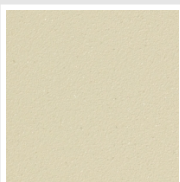


Deep Blue
Cod. 2F

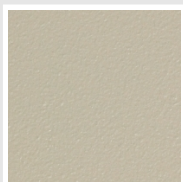
SPECIAL



Bianco Perla
Cod. 16



Quartz 1
Cod. 1C



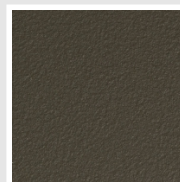
Sablé
Cod. Y4



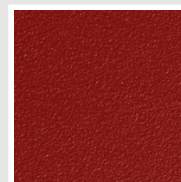
Quartz 2
Cod. 2C



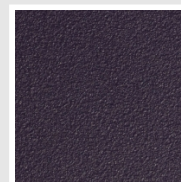
Sunstone
Cod. 2D



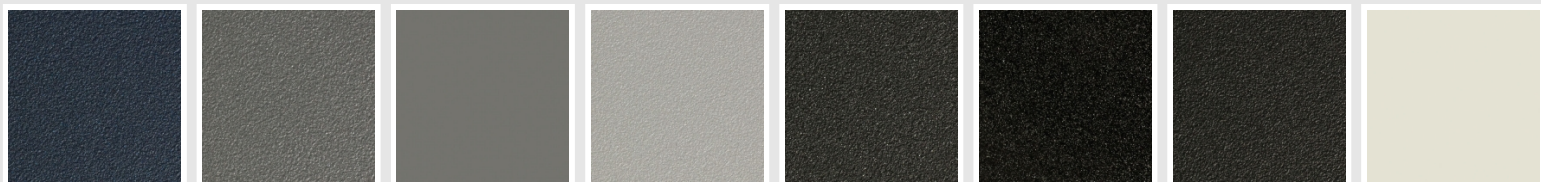
Bruno Tabacco
Cod. 1B



Flame Red
Cod. 7D



Purple Blue
Cod. 1D



Azurite 3
Cod. 6C

Grigio Medio
Cod. 4D

Grigio Titanio
Metallizzato - RAL
9023
Cod. L3

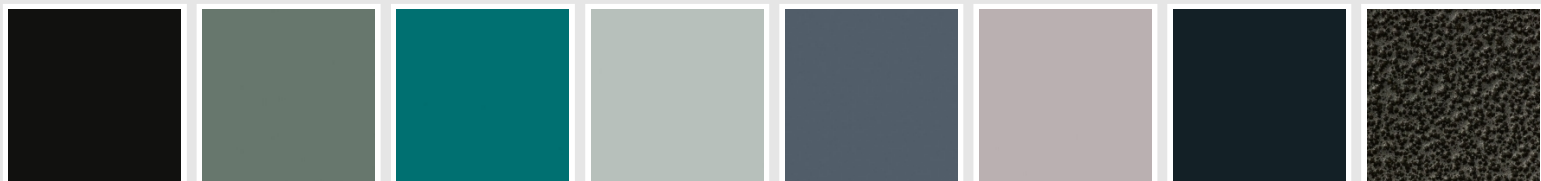
Grigio Perla
Cod. L6

Nero Grafite
Cod. 18

Grigio Quarzo
Cod. 31

Nero Satinato
Cod. 30

Bianco Opaco
Cod. J8



Nero Opaco
Cod. K1

Agave
Cod. 9N

Blu Baltico
Cod. 1P

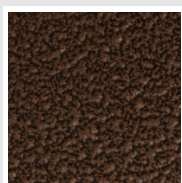
Ghiaccio
Cod. 3P

Blu Colomba
Opaco - RAL 5014
Cod. 4P

Grigio Chiaro Opaco
Cod. 8N

Grigio Cenere - Ral
7021
Cod. G1

Grigio Martellato
Cod. 32



Rame Martellato
Cod. J4

RAL



Other RAL Colours (following feasibility study)
Cod. ALTRIRAL

The Colors used in this folder are not considered binding. The different technological painting processes and the materials used for the realization can not have a perfect color match with the delivered product. Irsap company reserves the right to introduce at any time whatever modifications necessary to the improvement of the product.