

# Ellipsis\_H

image type unknown  
<http://www.irsap.it/resour>



Ellipsis H, orizontal, 8 elemente, înălțimea 480 mm, lățime 1820 mm, Alb Standard

## Caracteristici Tehnice

colectoare cu secțiunea circulară cu diametrul de 30 mm  
elemente de oțel cu secțiune eliptică 50x25 mm  
filetarea extremității colectorului 1/2" G dx  
presiunea maximă admisă de 4 bar  
temperatura maximă admisă de 95°C

## Standard equipment

kit "chela" pentru fixare pe perete dotate cu șuruburi și dibluri;  
dop de 1/2"  
elemente de acoperire  
aerisitor 1/2" cromat

## Certifications



## Plus



## Date tehnice

Model	Depth (mm)	Length (mm)	Conn. C. (mm)	Weight (kg)	Capacity (lt)
520	53,0	520	470	0,75	0,50
650	53,0	650	600	0,88	0,61
700	53,0	700	650	0,93	0,65
920	53,0	920	870	1,15	0,84
1020	53,0	1020	970	1,25	0,93
1220	53,0	1220	1170	1,45	1,09
1520	53,0	1520	1470	1,75	1,35
1820	53,0	1820	1770	2,05	1,60
2020	53,0	2020	1970	2,25	1,77

Grație prestațiilor ridicate ale corpurilor încălzitoare Irsap Ellipsis\_H Orizontal, se consideră ideale pentru proiectarea la joasă temperatură un  $\Delta t$  la 30°C

Pentru  $\Delta t \neq$  de 60°C utilizați formula:  $Q=Q_n (\Delta t / 60)^n$

### Standard equipment

- kit "chela" pentru fixare pe perete dotate cu șuruburi și dibluri;
- dop de 1/2"
- elemente de acoperire
- aerisitor 1/2" cromat

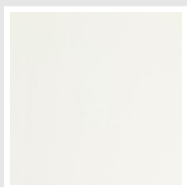
Number elements	4	6	8	10	12	14	16	18	20	22	24	26	28	30
Thermal Power linear mt. Watt a $\Delta t=60^\circ\text{C}$	431,8	644,4	863,2	1.068,7	1.276,4	1.479,8	1.681,0	1.880,0	2.076,8	2.271,3	2.463,8	2.654,2	2.842,7	3.029,1
Thermal Power linear mt. Watt a $\Delta t=50^\circ\text{C}$	341,2	510,5	681,6	847,8	1.016,0	1.181,7	1.346,4	1.510,2	1.673,2	1.835,2	1.996,4	2.156,7	2.316,2	2.474,9
Thermal Power linear mt. Watt a $\Delta t=40^\circ\text{C}$	255,8	383,8	510,5	638,6	768,5	897,2	1.026,1	1.155,1	1.284,3	1.413,7	1.543,2	1.672,8	1.802,6	1.932,5
Thermal Power linear mt. Watt a $\Delta t=30^\circ\text{C}$	176,4	265,8	351,7	443,1	536,2	629,1	722,9	817,6	913,3	1.009,8	1.107,3	1.205,6	1.304,8	1.404,9
Thermal Power linear mt. Watt a $\Delta t=20^\circ\text{C}$	104,5	158,3	208,0	264,8	322,9	381,5	441,3	502,4	564,8	628,5	693,5	759,8	827,4	896,3
Exponent	1,292	1,278	1,295	1,270	1,251	1,234	1,217	1,201	1,185	1,169	1,154	1,139	1,123	1,108

## Data Set

Height (mm) sub>	NÂ° Elements		520	650	700	920	1020	1220	1520	1820	2020
240	4	Watt =	177	222	239	314	348	416	519	621	689
360	6	Watt =	265	332	357	470	521	623	776	929	1031
480	8	Watt =	354	443	477	627	695	832	1036	1241	1377
600	10	Watt =	441	551	593	780	865	1034	1289	1543	1713
720	12	Watt =	528	660	711	935	1036	1240	1544	1849	2052
840	14	Watt =	614	768	827	1087	1205	1442	1796	2151	2387
960	16	Watt =	700	875	942	1239	1373	1643	2047	2450	2720
1080	18	Watt =	785	982	1057	1389	1540	1842	2296	2749	3051
1200	20	Watt =	870	1088	1171	1539	1707	2041	2543	3045	3380
1320	22	Watt =	954	1193	1285	1688	1872	2239	2789	3340	3707
1440	24	Watt =	1038	1298	1397	1837	2036	2436	3034	3633	
1560	26	Watt =	1121	1402	1510	1984	2200	2631	3278		
1680	28	Watt =	1204	1506	1621	2131	2362	2826	3521		
1800	30	Watt =	1287	1609	1732	2277	2524	3019	3762		

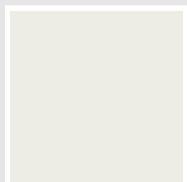
## Colori e finisaje

### STANDARD

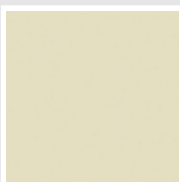


Bianco Standard  
Cod. 01

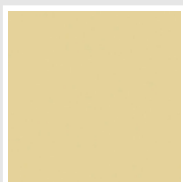
### CLASSIC



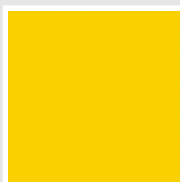
Bianco Edelweiss  
Cod. 34



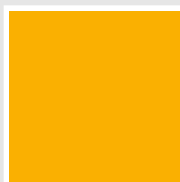
Avorio - RAL 1013  
Cod. 02



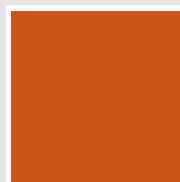
Beige Cream  
Cod. 26



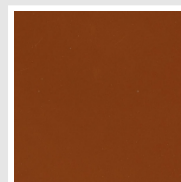
Giallo - RAL 1021  
Cod. 04



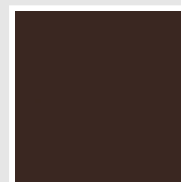
Giallo Melone - RAL  
1028  
Cod. E7



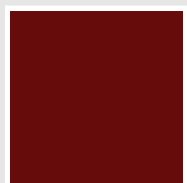
Arancio - RAL 2004  
Cod. 17



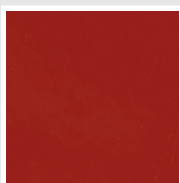
Marrone Ruggine -  
RAL 8004  
Cod. E1



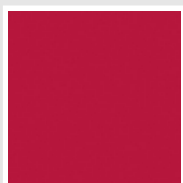
Marrone - RAL 8017  
Cod. 09



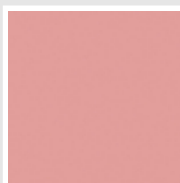
Amaranto - RAL 3003  
Cod. 06



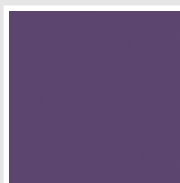
Rosso - RAL 3000  
Cod. 05



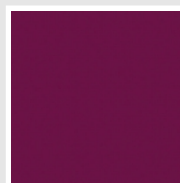
Rosso Fragola - RAL  
3018  
Cod. Y3



Rosa - RAL 3015  
Cod. R2



Lilla Bluastro - RAL  
4005  
Cod. R3



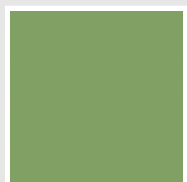
Porpora Traffico -  
RAL 4006  
Cod. R6



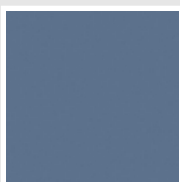
Verde Bosco - RAL  
6005  
Cod. 19



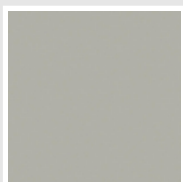
Verde Erba - RAL  
6018  
Cod. N3



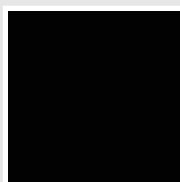
Verde Salvia - RAL  
6021  
Cod. E6



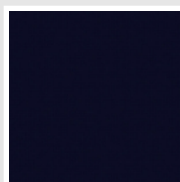
Blu Pastello - RAL  
5024  
Cod. G7



Grigio Manhattan  
Cod. 03

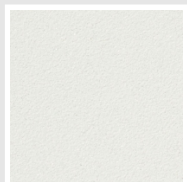


Nero - RAL 9005  
Cod. 10

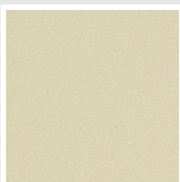


Deep Blue  
Cod. 2F

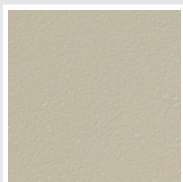
### SPECIAL



Bianco Perla  
Cod. 16



Quartz 1  
Cod. 1C



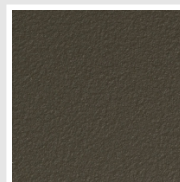
Sablé  
Cod. Y4



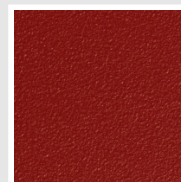
Quartz 2  
Cod. 2C



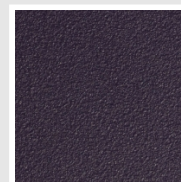
Sunstone  
Cod. 2D



Bruno Tabacco  
Cod. 1B



Flame Red  
Cod. 7D



Purple Blue  
Cod. 1D



Azurite 3  
Cod. 6C

Grigio Medio  
Cod. 4D

Grigio Titanio  
Metallizzato - RAL  
9023  
Cod. L3

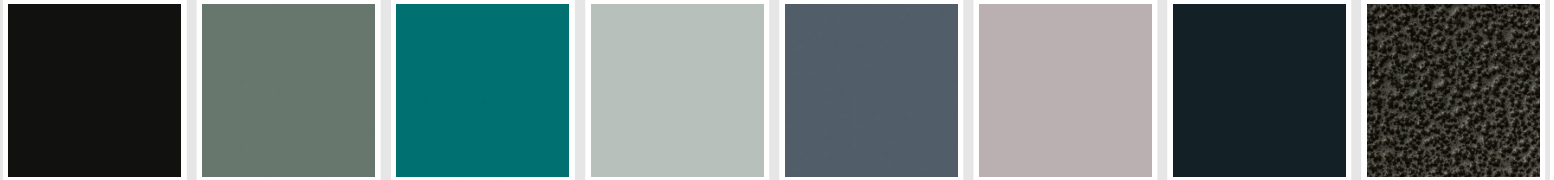
Grigio Perla  
Cod. L6

Nero Grafite  
Cod. 18

Grigio Quarzo  
Cod. 31

Nero Satinato  
Cod. 30

Bianco Opaco  
Cod. J8



Nero Opaco  
Cod. K1

Agave  
Cod. 9N

Blu Baltico  
Cod. 1P

Ghiaccio  
Cod. 3P

Blu Colomba  
Opaco - RAL 5014  
Cod. 4P

Grigio Chiaro Opaco  
Cod. 8N

Grigio Cenere - Ral  
7021  
Cod. G1

Grigio Martellato  
Cod. 32



Rame Martellato  
Cod. J4

## RAL



Other RAL Colours (following feasibility study)  
Cod. ALTRIRAL

The Colors used in this folder are not considered binding. The different technological painting processes and the materials used for the realization can not have a perfect color match with the delivered product. Irsap company reserves the right to introduce at any time whatever modifications necessary to the improvement of the product.