

Propor?iile echilibrate ale elemen?ilor de înc?lzire pun în relief unicitatea acestui radiator, conceput special pentru camera de baie. Disponibil în 4 variante de în?l?ime ?i 4 de l??ime. Mul?umit? rezisten?ei electrice (disponibil? op?ional), poate func?iona chiar ?i atunci când instala?ia de înc?lzire este oprit?.



Vela, înăl?imea 1820 mm, lă?ime 660 mm, Negru - RAL 9005

Caracteristici Tehnice

calorifer port prosop din o?el cu elemente orizontale cu ?eava ovale de 50x20 mm

colectoare laterale cu sec?iune semiovală de 40x30 mm

filetarea extremită?ii colectorului de 1/2" Gas drept

presiunea maximă admisă de 4 bar

temperatura maximă admisă de 95°C

Standard equipment

3 console pentru fixarea pe perete calorifer VELA alb, 2 console CHELA pentru calorifer VELA Seria Color pentru fixarea la perete
aerisitor

Certifications



Plus



Date tehnice

Model	Depth (mm)	Height (mm)	Width (mm)	Conn. C. (mm)	Weight (kg)	Capacity (lt)	$\Delta t=60^{\circ}\text{C}$ (Watt)	$\Delta t=50^{\circ}\text{C}$ (Watt)	$\Delta t=40^{\circ}\text{C}$ (Watt)	$\Delta t=30^{\circ}\text{C}$ (Watt)	$\Delta t=20^{\circ}\text{C}$ (Watt)	Exponent	mixed oper. (Watt)
700 9 țevi 1 spațiu	30,0	700	460	416	6,50	3,90	392,0	314,0	239,0	169,0	103,0	1,215	300
700 9 țevi 1 spațiu	30,0	700	560	516	7,80	4,50	449,0	359,0	273,0	192,0	117,0	1,225	400
700 9 țevi 1 spațiu	30,0	700	660	616	9,10	5,20	507,0	405,0	307,0	216,0	131,0	1,235	400
1120 14 țevi 2 spații	30,0	1120	460	416	10,20	6,10	590,0	470,0	356,0	248,0	150,0	1,247	400
1120 14 țevi 2 spații	30,0	1120	560	516	12,20	7,10	693,0	552,0	418,0	292,0	177,0	1,244	400
1120 14 țevi 2 spații	30,0	1120	660	616	14,20	8,10	796,0	634,0	481,0	336,0	203,0	1,242	700
1610 20 țevi 3 spații	30,0	1610	460	416	14,60	8,70	848,0	676,0	513,0	359,0	217,0	1,240	700
1610 20 țevi 3 spații	30,0	1610	560	516	17,40	10,20	1.008,0	805,0	611,0	428,0	259,0	1,238	700
1610 20 țevi 3 spații	30,0	1610	660	616	20,30	11,60	1.169,0	933,0	708,0	497,0	301,0	1,235	1000
1820 23 țevi 3 spații	30,0	1820	460	416	16,70	9,90	965,0	768,0	580,0	404,0	243,0	1,254	700
1820 23 țevi 3 spații	30,0	1820	560	516	20,00	11,60	1.135,0	903,0	682,0	475,0	285,0	1,257	1000
1820 23 țevi 3 spații	30,0	1820	660	616	23,20	13,30	1.305,0	1.038,0	783,0	545,0	327,0	1,259	1000

(*) Grație prestațiilor ridicate ale corpurilor încălzitoare Irsap Vela, se consideră ideale pentru proiectarea la joasă temperatură un Δt la 30°C

Pentru $\Delta t \neq$ de 60°C utilizați formula: $Q=Q_n (\Delta t / 60)^n$

Standard equipment

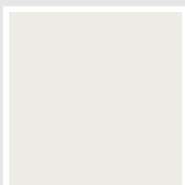
- 3 console pentru fixarea pe perete calorifer VELA alb, 2 console CHELA pentru calorifer VELA Seria Color pentru fixarea la perete
- aerisitor

Packing

Atenția pe care Irsap o rezervă fiecărui calorifer se manifestă și în grija pentru ambalaj. Fiecare produs este protejat de un material antișoc care previne zgârieturile și deteriorările accidentale pe parcursul transportului sau a manipulării pe șantier. Toate ambalajele trebuie colectate și reciclate conform legislației în vigoare.

Colori e finisaje

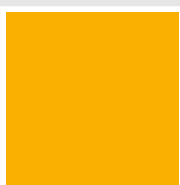
CLASSIC



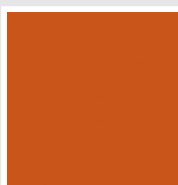
Bianco Edelweiss
Cod. 34



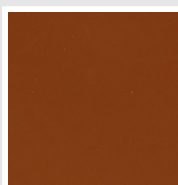
Beige Cream
Cod. 26



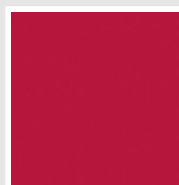
Giallo Melone - RAL
1028
Cod. E7



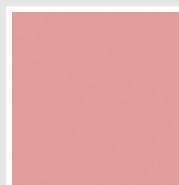
Arancio - RAL 2004
Cod. 17



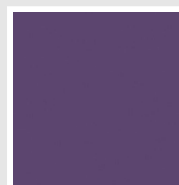
Marrone Ruggine -
RAL 8004
Cod. E1



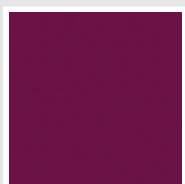
Rosso Fragola - RAL
3018
Cod. Y3



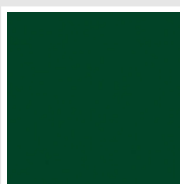
Rosa - RAL 3015
Cod. R2



Lilla Bluastro - RAL
4005
Cod. R3



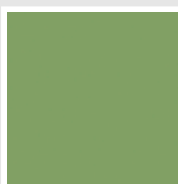
Porpora Traffico -
RAL 4006
Cod. R6



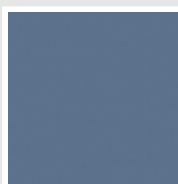
Verde Bosco - RAL
6005
Cod. 19



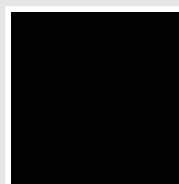
Verde Erba - RAL
6018
Cod. N3



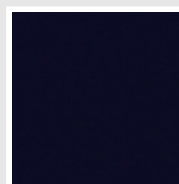
Verde Salvia - RAL
6021
Cod. E6



Blu Pastello - RAL
5024
Cod. G7

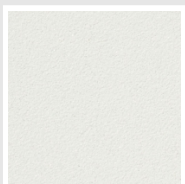


Nero - RAL 9005
Cod. 10

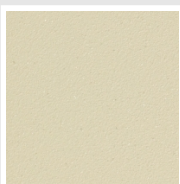


Deep Blue
Cod. 2F

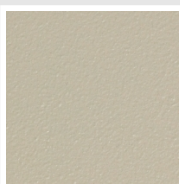
SPECIAL



Bianco Perla
Cod. 16



Quartz 1
Cod. 1C



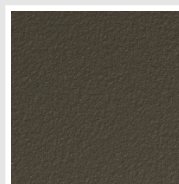
Sablé
Cod. Y4



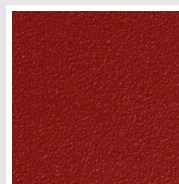
Quartz 2
Cod. 2C



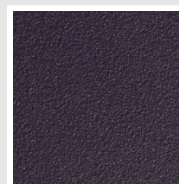
Sunstone
Cod. 2D



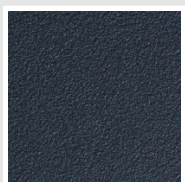
Bruno Tabacco
Cod. 1B



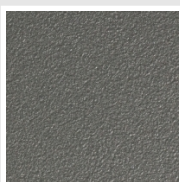
Flame Red
Cod. 7D



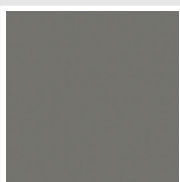
Purple Blue
Cod. 1D



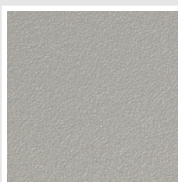
Azurite 3
Cod. 6C



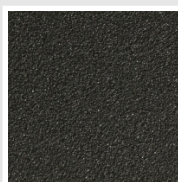
Grigio Medio
Cod. 4D



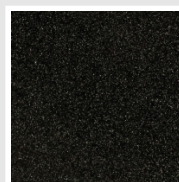
Grigio Titanio
Metallizzato - RAL
9023
Cod. L3



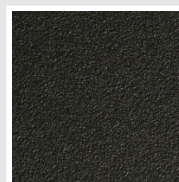
Grigio Perla
Cod. L6



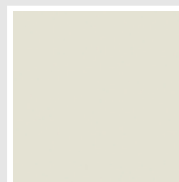
Nero Grafite
Cod. 18



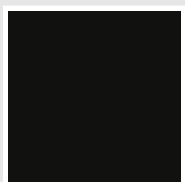
Grigio Quarzo
Cod. 31



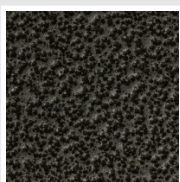
Nero Satinato
Cod. 30



Bianco Opaco
Cod. J8



Nero Opaco
Cod. K1



Grigio Martellato
Cod. 32



Rame Martellato
Cod. J4

FINISHES



Trattamento Loft
Cod. TR

The Colors used in this folder are not considered binding. The different technological painting processes and the materials used for the realization can not have a perfect color match with the delivered product. Irsap company reserves the right to introduce at any time whatever modifications necessary to the improvement of the product.