

Gama inovatoare de calorifere FACE reprezintă o nouă iconă a încălzirii contemporane. O soluție pentru cei care își doresc în casă un înalt confort estetic, dar și tehnologic. Sunt disponibile patru variante cu finisaje exclusive și combinații cromatice studiate pentru a se integra armonios în spații rafinate și elegante.



Face, înălțimea 1800 mm, lățime 600 mm, Negru Satinat,

Caracteristici Tehnice

placă de oțel radiante

racord de 1/2"

presiunea maximă de lucru admisă 4 bar

temperatura maximă de lucru admisă 95°C

Standard equipment

2 retur 1/2" FE 1/2" FI racord FE

furtune flexibile pentru a înlesni instalarea

sistem de fixare pe perete

2 baterii

cap termostatic modulant

Plus



Date tehnice

Model	Depth (mm)	Height (mm)	Width (mm)	Conn. C. (mm)	Weight (kg)	Capacity (lt)	$\Delta t=60^{\circ}\text{C}$ (Watt)	$\Delta t=50^{\circ}\text{C}$ (Watt)	$\Delta t=40^{\circ}\text{C}$ (Watt)	$\Delta t=30^{\circ}\text{C}$ (Watt)	$\Delta t=20^{\circ}\text{C}$ (Watt)	Exponent
FACE 1600 x 500	75,0	1597	500	50	30,40	1,20	677,0	540,0	409,0	287,0	173,0	1,240
FACE 1600 x 600	75,0	1597	598	50	36,10	1,60	901,0	720,0	547,0	384,0	233,0	1,240
FACE 1800 x 500	75,0	1797	500	50	34,40	1,40	865,0	690,0	523,0	366,0	222,0	1,230
FACE 1800 x 600	75,0	1797	598	50	40,90	1,80	1.126,0	900,0	684,0	480,0	292,0	1,230

Grație prestațiilor ridicate ale corpurilor încălzitoare Irsap Face, se consideră ideale pentru proiectarea la joasă temperatură un Δt la 30°C

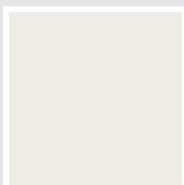
Pentru $\Delta t \neq$ de 60°C utilizați formula: $Q=Q_n (\Delta t / 60)^n$

Standard equipment

- 2 retur 1/2" FE 1/2" FI racord FE
- furtune flexibile pentru a înlesni instalarea
- sistem de fixare pe perete
- 2 baterii
- cap termostatic modulant

Colori e finisaje

CLASSIC



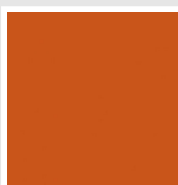
Bianco Edelweiss
Cod. 34



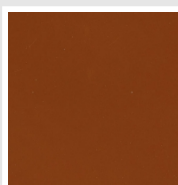
Beige Cream
Cod. 26



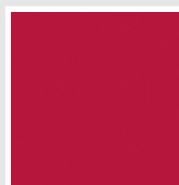
Giallo Melone - RAL
1028
Cod. E7



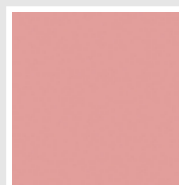
Arancio - RAL 2004
Cod. 17



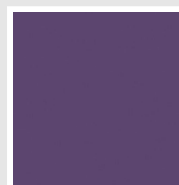
Marrone Ruggine -
RAL 8004
Cod. E1



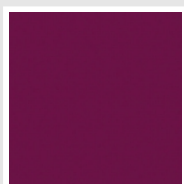
Rosso Fragola - RAL
3018
Cod. Y3



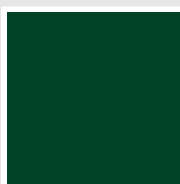
Rosa - RAL 3015
Cod. R2



Lilla Bluastro - RAL
4005
Cod. R3



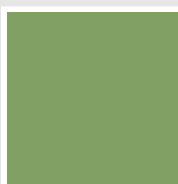
Porpora Traffico -
RAL 4006
Cod. R6



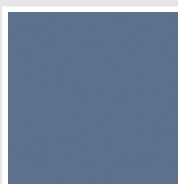
Verde Bosco - RAL
6005
Cod. 19



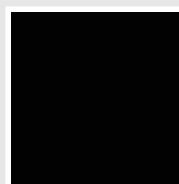
Verde Erba - RAL
6018
Cod. N3



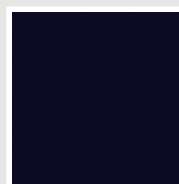
Verde Salvia - RAL
6021
Cod. E6



Blu Pastello - RAL
5024
Cod. G7

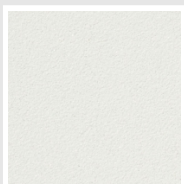


Nero - RAL 9005
Cod. 10

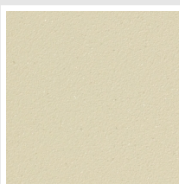


Deep Blue
Cod. 2F

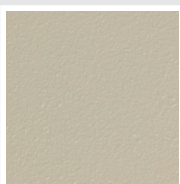
SPECIAL



Bianco Perla
Cod. 16



Quartz 1
Cod. 1C



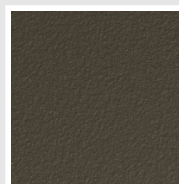
Sablé
Cod. Y4



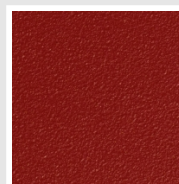
Quartz 2
Cod. 2C



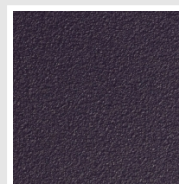
Sunstone
Cod. 2D



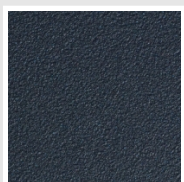
Bruno Tabacco
Cod. 1B



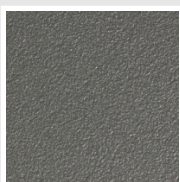
Flame Red
Cod. 7D



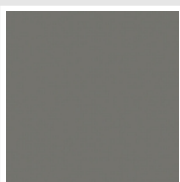
Purple Blue
Cod. 1D



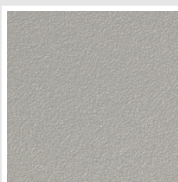
Azurite 3
Cod. 6C



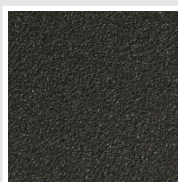
Grigio Medio
Cod. 4D



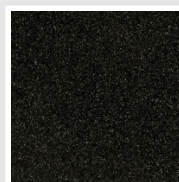
Grigio Titanio
Metallizzato - RAL
9023
Cod. L3



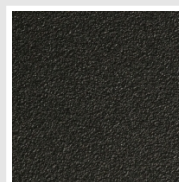
Grigio Perla
Cod. L6



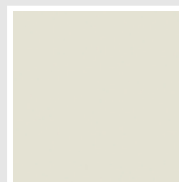
Nero Grafite
Cod. 18



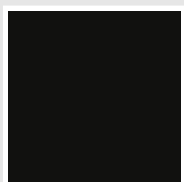
Grigio Quarzo
Cod. 31



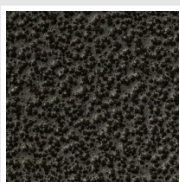
Nero Satinato
Cod. 30



Bianco Opaco
Cod. J8



Nero Opaco
Cod. K1

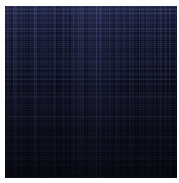


Grigio Martellato
Cod. 32

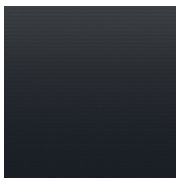


Rame Martellato
Cod. J4

FINISHES



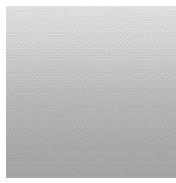
Fabric Blue
Cod. 1G



Nero Dots
Cod. 2G



Nero Satinato
Cod. 3G



Glossy Linen
Cod. 4G

The Colors used in this folder are not considered binding. The different technological painting processes and the materials used for the realization can not have a perfect color match with the delivered product. Irsap company reserves the right to introduce at any time whatever modifications necessary to the improvement of the product.