

Împletirea original? a tuburilor face din Tesi Memory un obiect de design unic. Finisajele Surfaces îi accentuează originalitatea, făcându-l să devină protagonist al decorului oricărui încăperi.



Tesi Memory, 10 elemente, înălțimea 1802 mm, lățime 654 mm, Sunstone

## Caracteristici Tehnice

țevi din oțel cu diametrul de 25 mm  
colectoare din tablă de oțel imprimată  
distanța între elemente de 65 mm  
filetarea extremității colectorului superior și inferior 1/2" G dx  
presiunea maximă de lucru admisă 8 bar  
temperatura maximă de lucru admisă 95°C

## Standard equipment

Kit pentru fixarea pe perete în finisaj corespunzător caloriferului  
Kit pentru conexiunile hidraulice (robinet tur-retur) în finisaj corespunzător caloriferului, dotat cu racorduri de cupru (diametre 12, 14 mm) multistrat (14 gr. 2 și 16 gr. 2)  
Kit aerisitor cromat  
Kit de elemente de acoperire a țevelor cromat  
1 dop de 1/2" cu element cromat de acoperire a dopului  
N.B. Sunt incluse în dotarea standard robinet tur-retur în unghi drept sau grupul supape cu pas de 50 mm în unghi pentru variantele cu conexiune de 50 mm.

## Plus



## Date tehnice

Model	Depth (mm)	Height (mm)	Width (mm)	Conn. C. (mm)	Weight (kg)	Capacity (lt)	$\Delta t=60^{\circ}\text{C}$ (Watt)	$\Delta t=50^{\circ}\text{C}$ (Watt)	$\Delta t=40^{\circ}\text{C}$ (Watt)	$\Delta t=30^{\circ}\text{C}$ (Watt)	$\Delta t=20^{\circ}\text{C}$ (Watt)	Exponent
1800 06 el.	65,0	1802	394	1735	15,20	10,50	1.138,2	896,4	669,0	459,0	270,0	1,311
1800 08 el.	65,0	1802	524	1735	20,30	14,00	1.517,6	1.195,2	892,0	612,0	360,0	1,311
1800 10 el.	65,0	1802	654	1735	25,40	17,50	1.897,0	1.494,0	1.115,0	765,0	450,0	1,311
2000 06 el.	65,0	2002	394	1935	16,80	11,50	1.261,8	994,2	742,8	510,0	300,6	1,306
2000 08 el.	65,0	2002	524	1935	22,40	15,40	1.682,4	1.325,6	990,4	680,0	400,8	1,306
2000 10 el.	65,0	2002	654	1935	28,00	19,20	2.103,0	1.657,0	1.238,0	850,0	501,0	1,306

Grație prestațiilor ridicate ale corpurilor încălzitoare Irsap Tesi Memory, se consideră ideale pentru proiectarea la joasă temperatură un  $\Delta t$  la  $30^{\circ}\text{C}$

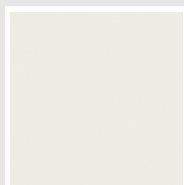
Pentru  $\Delta t \neq 60^{\circ}\text{C}$  utilizați formula:  $Q=Q_n (\Delta t / 60)^n$

### Standard equipment

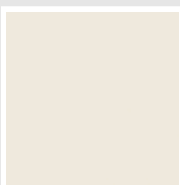
- Kit pentru fixarea pe perete în finisaj corespunzător caloriferului
- Kit pentru conexiunile hidraulice (robinet tur-retur) în finisaj corespunzător caloriferului, dotat cu racorduri de cupru (diametre 12, 14 mm) multistrat (14 gr. 2 și 16 gr. 2)
- Kit aerisitor cromat
- Kit de elemente de acoperire a țevilor cromat
- 1 dop de 1/2" cu element cromat de acoperire a dopului N.B. Sunt incluse în dotarea standard robinet tur-retur în unghi drept sau grupul supape cu pas de 50 mm în unghi pentru variantele cu conexiune de 50 mm.

## Colori e finisaje

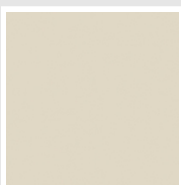
### CLASSIC



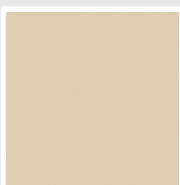
Bianco Edelweiss  
Opaco  
Cod. 34



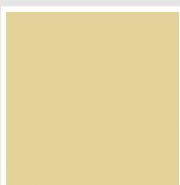
Bianco Whisper  
Peach  
Cod. 36



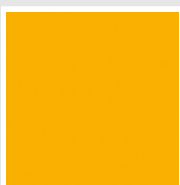
Jasmin Opaco  
Cod. 35



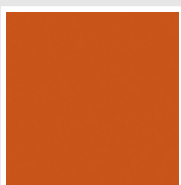
Beige Naturale  
Cod. 38



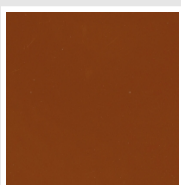
Beige Cream  
Cod. 26



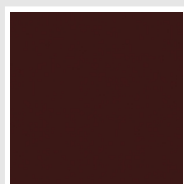
Giallo Melone - RAL  
1028  
Cod. E7



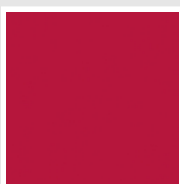
Arancio - RAL 2004  
Cod. 17



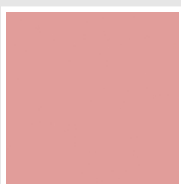
Marrone Ruggine -  
RAL 8004  
Cod. E1



Vinaccia - RAL 3005  
Cod. H9



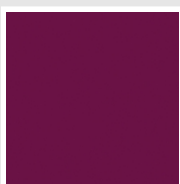
Rosso Fragola - RAL  
3018  
Cod. Y3



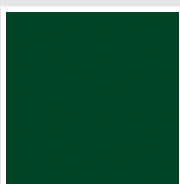
Rosa - RAL 3015  
Cod. R2



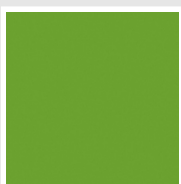
Lilla Bluastro - RAL  
4005  
Cod. R3



Porpora Traffico -  
RAL 4006  
Cod. R6



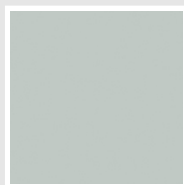
Verde Bosco - RAL  
6005  
Cod. 19



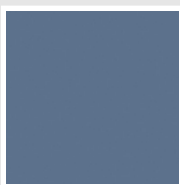
Verde Erba - RAL  
6018  
Cod. N3



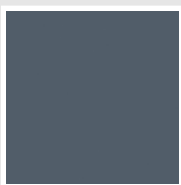
Verde Salvia - RAL  
6021  
Cod. E6



Verde Greenwich  
Cod. 28



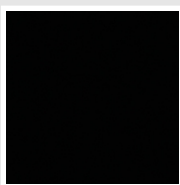
Blu Pastello - RAL  
5024  
Cod. G7



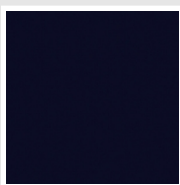
Blu Colomba - RAL  
5014  
Cod. G9



Blu Hewi  
Cod. 11

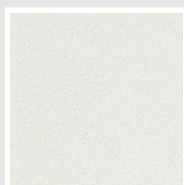


Nero - RAL 9005  
Cod. 10

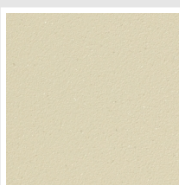


Deep Blue  
Cod. 2F

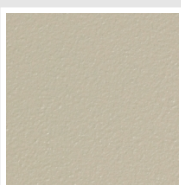
### SPECIAL



Bianco Perla  
Cod. 16



Quartz 1  
Cod. 1C



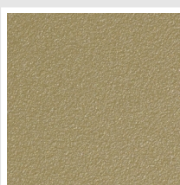
Sablé  
Cod. Y4



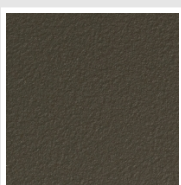
Quartz 2  
Cod. 2C



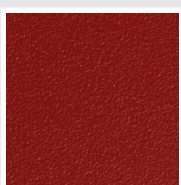
Sunstone  
Cod. 2D



Petra  
Cod. 3D



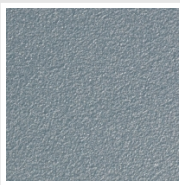
Bruno Tabacco  
Cod. 1B



Flame Red  
Cod. 7D



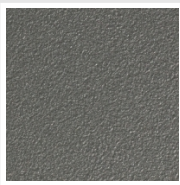
Purple Blue  
Cod. 1D



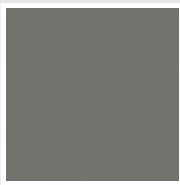
Azurite  
Cod. 6D



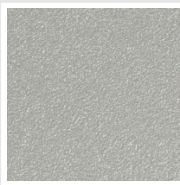
Azurite 3  
Cod. 6C



Grigio Medio  
Cod. 4D



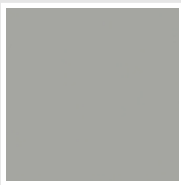
Grigio Titanio  
Metallizzato - RAL  
9023  
Cod. L3



Grigio Silver  
Cod. 5D



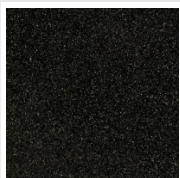
Grigio Perla  
Cod. L6



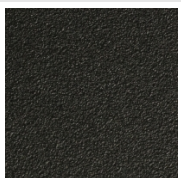
Grigio Alluminio -  
RAL 9006  
Cod. B4



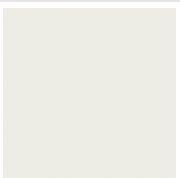
Nero Grafite  
Cod. 18



Grigio Quarzo  
Cod. 31



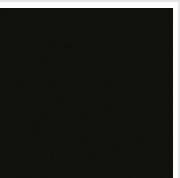
Nero Satinato  
Cod. 30



Luxury White  
Cod. J7



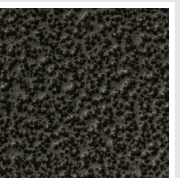
Bianco Opaco  
Cod. J8



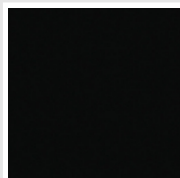
Nero Opaco  
Cod. K1



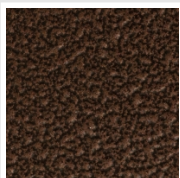
Bronzo  
Cod. J9



Grigio Martellato  
Cod. 32

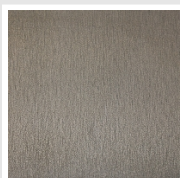


Luxury Black  
Cod. J3



Rame Martellato  
Cod. J4

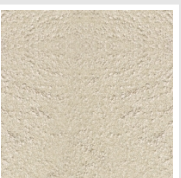
## SURFACES



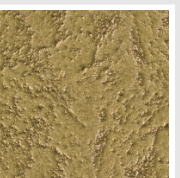
Trattamento Loft  
Cod. TR



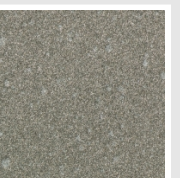
Taftah Argento  
Cod. K4



Taftah Platino  
Cod. K3



Taftah Oro  
Cod. K2



Grey Shadow  
Cod. X6

The Colors used in this folder are not considered binding. The different technological painting processes and the materials used for the realization can not have a perfect color match with the delivered product. Irsap company reserves the right to introduce at any time whatever modifications necessary to the improvement of the product.