



Rigo, , înălțimea 543 mm, lățime 1520 mm, Roșu - RAL 3000

Caracteristici Tehnice

uscător de prosoape de oțel cu elemente orizontale în formă de țeava rotundă cu diametrul de 23 mm, montat prin sudare în relief pe colectorul de 30 mm

filetări la extremitățile colectorului, primul tub de jos 1/2" gaz dreapta
presiunea maximă de lucru admisă 8 bar
temperatura maximă de lucru admisă 95°C

Standard equipment

4 console CHELA pentru fixarea la perete
aerisitor

Plus



Date tehnice

Model	Depth (mm)	Height (mm)	Width (mm)	Conn. C. (mm)	Weight (kg)	Capacity (lt)	$\Delta t=60^{\circ}\text{C}$ (Watt)	$\Delta t=50^{\circ}\text{C}$ (Watt)	$\Delta t=40^{\circ}\text{C}$ (Watt)	$\Delta t=30^{\circ}\text{C}$ (Watt)	$\Delta t=20^{\circ}\text{C}$ (Watt)	Exponent	mixed oper. (Watt)
373 9 țevi 1 spațiu	50,0	373	520	470	4,00	2,00	298,0	240,0	184,0	131,0	81,0	1,184	-
373 9 țevi 1 spațiu	50,0	373	1220	1170	8,30	4,00	641,0	517,0	398,0	283,0	176,0	1,177	-
373 9 țevi 1 spațiu	50,0	373	1520	1470	10,20	4,90	800,0	647,0	499,0	357,0	222,0	1,165	-
543 14 țevi 1 spațiu	50,0	543	520	470	6,00	3,00	448,0	360,0	275,0	195,0	120,0	1,203	400
543 14 țevi 1 spațiu	50,0	543	1220	1170	12,90	6,20	964,0	776,0	595,0	423,0	261,0	1,190	400
543 14 țevi 1 spațiu	50,0	543	1520	1470	15,80	7,60	1.197,0	967,0	745,0	532,0	331,0	1,169	400
985 25 țevi 2 spații	50,0	985	520	470	10,80	5,40	806,0	646,0	492,0	347,0	212,0	1,216	700
985 25 țevi 2 spații	50,0	985	1220	1170	23,00	11,10	1.722,0	1.383,0	1.058,0	748,0	460,0	1,203	1000
985 25 țevi 2 spații	50,0	985	1520	1470	28,20	13,60	2.129,0	1.716,0	1.318,0	938,0	581,0	1,182	1000

Grație prestațiilor ridicate ale corpurilor încălzitoare Irsap Rigo, se consideră ideale pentru proiectarea la joasă temperatură un Δt la 30°C

Randamentul este calculat în fază de certificare. Putere calculată cu Δt 60°C . Pentru $\Delta t \neq$ de 60°C utilizați formula: $Q=Q_n (\Delta t / 60)^n$

Standard equipment

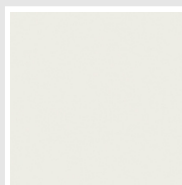
- 4 console CHELA pentru fixarea la perete
- aerisitor

Packing

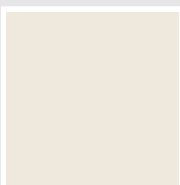
Atenția pe care Irsap o rezervă fiecărui calorifer se manifestă și în grija pentru ambalaj. Fiecare produs este protejat de un material antișoc care previne zgârieturile și deteriorările accidentale pe parcursul transportului sau a manipulării pe șantier. Toate ambalajele trebuie colectate și reciclate conform legislației în vigoare.

Colori e finisaje

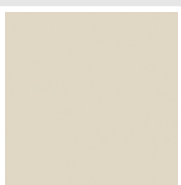
CLASSIC



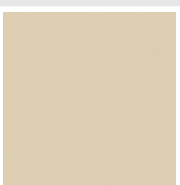
Bianco Edelweiss
Opaco
Cod. 34



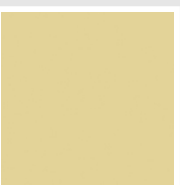
Bianco Whisper
Peach
Cod. 36



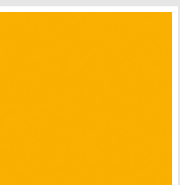
Jasmin Opaco
Cod. 35



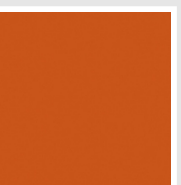
Beige Naturale
Cod. 38



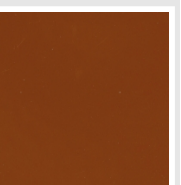
Beige Cream
Cod. 26



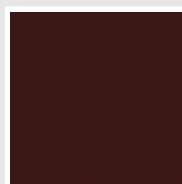
Giallo Melone - RAL
1028
Cod. E7



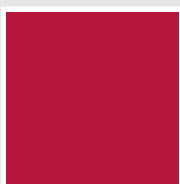
Arancio - RAL 2004
Cod. 17



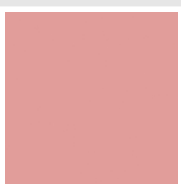
Marrone Ruggine -
RAL 8004
Cod. E1



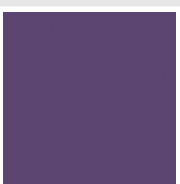
Vinaccia - RAL 3005
Cod. H9



Rosso Fragola - RAL
3018
Cod. Y3



Rosa - RAL 3015
Cod. R2



Lilla Bluastro - RAL
4005
Cod. R3



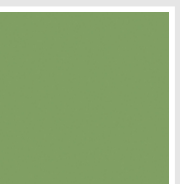
Porpora Traffico -
RAL 4006
Cod. R6



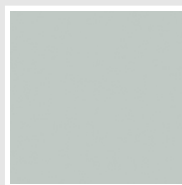
Verde Bosco - RAL
6005
Cod. 19



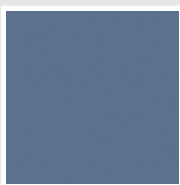
Verde Erba - RAL
6018
Cod. N3



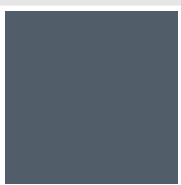
Verde Salvia - RAL
6021
Cod. E6



Verde Greenwich
Cod. 28



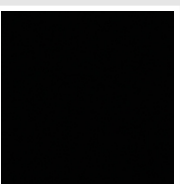
Blu Pastello - RAL
5024
Cod. G7



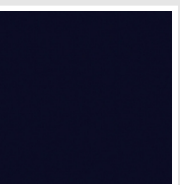
Blu Colomba - RAL
5014
Cod. G9



Blu Hewi
Cod. 11

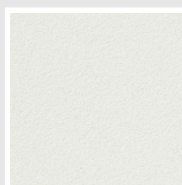


Nero - RAL 9005
Cod. 10

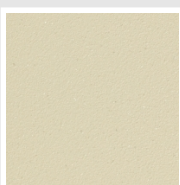


Deep Blue
Cod. 2F

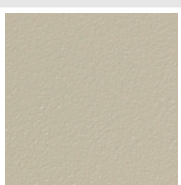
SPECIAL



Bianco Perla
Cod. 16



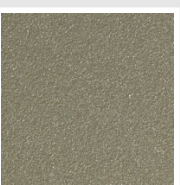
Quartz 1
Cod. 1C



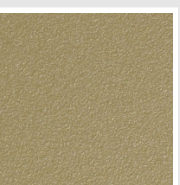
Sablé
Cod. Y4



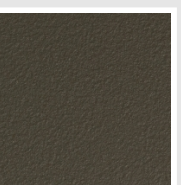
Quartz 2
Cod. 2C



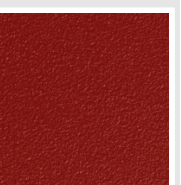
Sunstone
Cod. 2D



Petra
Cod. 3D



Bruno Tabacco
Cod. 1B



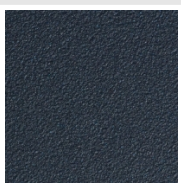
Flame Red
Cod. 7D



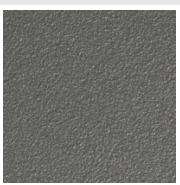
Purple Blue
Cod. 1D



Azurite
Cod. 6D



Azurite 3
Cod. 6C



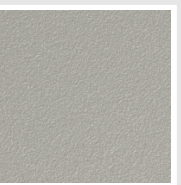
Grigio Medio
Cod. 4D



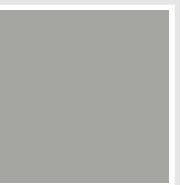
Grigio Titanio
Metallizzato - RAL
9023
Cod. L3



Grigio Silver
Cod. 5D



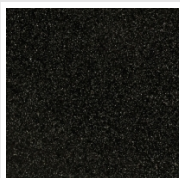
Grigio Perla
Cod. L6



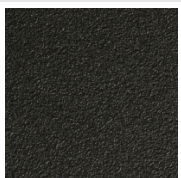
Grigio Alluminio -
RAL 9006
Cod. B4



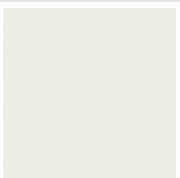
Nero Grafite
Cod. 18



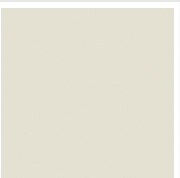
Grigio Quarzo
Cod. 31



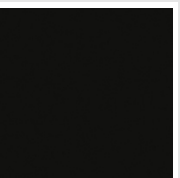
Nero Satinato
Cod. 30



Luxury White
Cod. J7



Bianco Opaco
Cod. J8



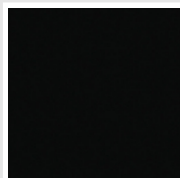
Nero Opaco
Cod. K1



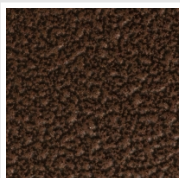
Bronzo
Cod. J9



Grigio Martellato
Cod. 32

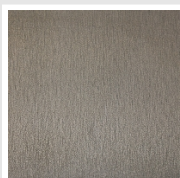


Luxury Black
Cod. J3



Rame Martellato
Cod. J4

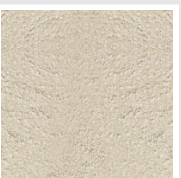
SURFACES



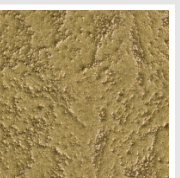
Trattamento Loft
Cod. TR



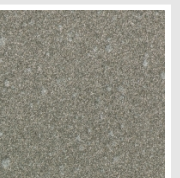
Taftah Argento
Cod. K4



Taftah Platino
Cod. K3



Taftah Oro
Cod. K2



Grey Shadow
Cod. X6

The Colors used in this folder are not considered binding. The different technological painting processes and the materials used for the realization can not have a perfect color match with the delivered product. Irsap company reserves the right to introduce at any time whatever modifications necessary to the improvement of the product.