



Jazz Air, înălțimea 1290 mm, lățime 600 mm, electric, cu difuzor, Alb Standard

## Caracteristici Tehnice

țevi din tablă de oțel dreptunghiulare 25x20 mm  
colectoare din tablă de oțel pătrate 30x30 mm  
prevăzută cu agent termic lichid și cu un sistem suplimentar de putere electrică care atinge 1000 Watt. Acest sistem suplimentar de putere electrică este asociat cu un ventilator pentru uniformizarea temperaturii setate în încăpere

## Standard equipment

4 console pentru fixarea pe perete, de aceeași culoare cu caloriferul  
telecomandă Wireless

## Certifications

CE<sub>17</sub>  
EN442-1

## Plus



## Date tehnice

Model	Depth (mm)	Height (mm)	Width (mm)	Conn. C. (mm)	Weight (kg)	Electric Power (Watt)	Electric Power with Booster (Watt)
-------	------------	-------------	------------	---------------	-------------	-----------------------	------------------------------------

### DX

890 18 țevi 2 spații	124,0	939	600	50	21,40	400	1000
----------------------	-------	-----	-----	----	-------	-----	------

1290 28 țevi 2 spații	124,0	1339	600	50	30,00	750	1000
-----------------------	-------	------	-----	----	-------	-----	------

1770 38 țevi 3 spații	124,0	1819	600	50	39,00	1000	1000
-----------------------	-------	------	-----	----	-------	------	------

### SX

890 18 țevi 2 spații	124,0	939	600	50	21,40	400	1000
----------------------	-------	-----	-----	----	-------	-----	------

1290 28 țevi 2 spații	124,0	1339	600	50	30,00	750	1000
-----------------------	-------	------	-----	----	-------	-----	------

1770 38 țevi 3 spații	124,0	1819	600	50	39,00	1000	1000
-----------------------	-------	------	-----	----	-------	------	------

Caloriferul se livrează cu rezistența montată întotdeauna în partea dreaptă.

### Standard equipment

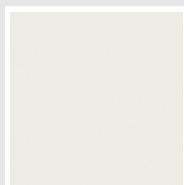
- 4 console pentru fixarea pe perete, de aceeași culoare cu caloriferul
- telecomandă Wireless

### Packing

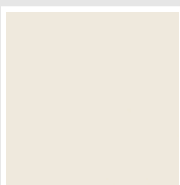
Atenția pe care Irsap o rezervă fiecărui calorifer se manifestă și în grija pentru ambalaj. Fiecare produs este protejat de un material antișoc care previne zgârieturile și deteriorările accidentale pe parcursul transportului sau a manipulării pe șantier. Toate ambalajele trebuie colectate și reciclate conform legislației în vigoare.

# Colori e finisaje

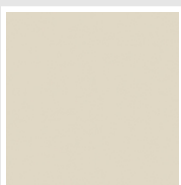
## CLASSIC



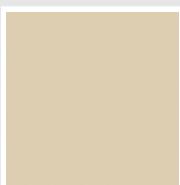
Bianco Edelweiss  
Opaco  
Cod. 34



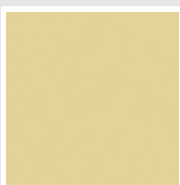
Bianco Whisper  
Peach  
Cod. 36



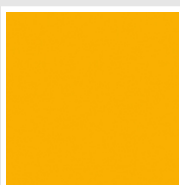
Jasmin Opaco  
Cod. 35



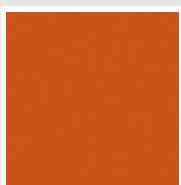
Beige Naturale  
Cod. 38



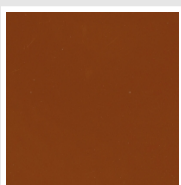
Beige Cream  
Cod. 26



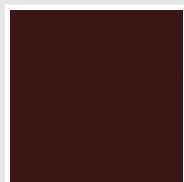
Giallo Melone - RAL  
1028  
Cod. E7



Arancio - RAL 2004  
Cod. 17



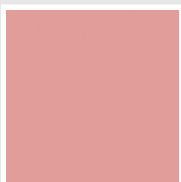
Marrone Ruggine -  
RAL 8004  
Cod. E1



Vinaccia - RAL 3005  
Cod. H9



Rosso Fragola - RAL  
3018  
Cod. Y3



Rosa - RAL 3015  
Cod. R2



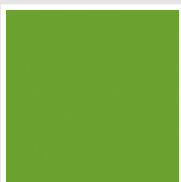
Lilla Bluastro - RAL  
4005  
Cod. R3



Porpora Traffico -  
RAL 4006  
Cod. R6



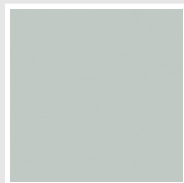
Verde Bosco - RAL  
6005  
Cod. 19



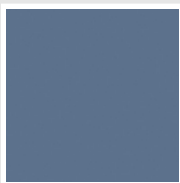
Verde Erba - RAL  
6018  
Cod. N3



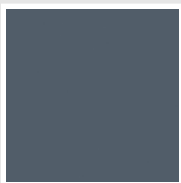
Verde Salvia - RAL  
6021  
Cod. E6



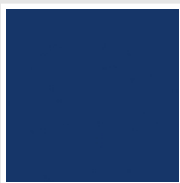
Verde Greenwich  
Cod. 28



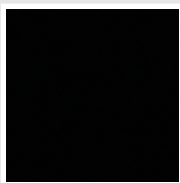
Blu Pastello - RAL  
5024  
Cod. G7



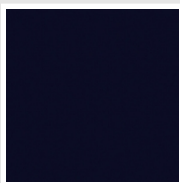
Blu Colomba - RAL  
5014  
Cod. G9



Blu Hewi  
Cod. 11

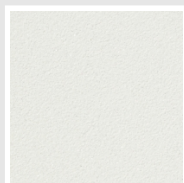


Nero - RAL 9005  
Cod. 10

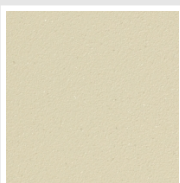


Deep Blue  
Cod. 2F

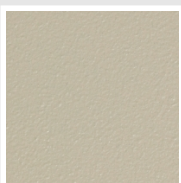
## SPECIAL



Bianco Perla  
Cod. 16



Quartz 1  
Cod. 1C



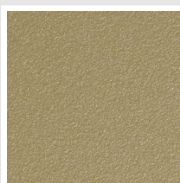
Sablé  
Cod. Y4



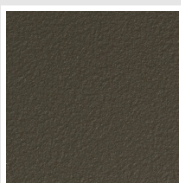
Quartz 2  
Cod. 2C



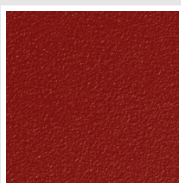
Sunstone  
Cod. 2D



Petra  
Cod. 3D



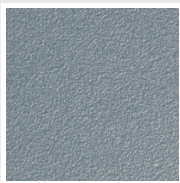
Bruno Tabacco  
Cod. 1B



Flame Red  
Cod. 7D



Purple Blue  
Cod. 1D



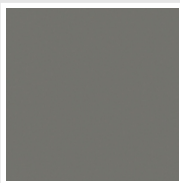
Azurite  
Cod. 6D



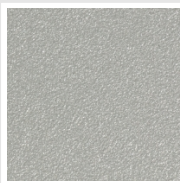
Azurite 3  
Cod. 6C



Grigio Medio  
Cod. 4D



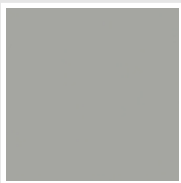
Grigio Titanio  
Metallizzato - RAL  
9023  
Cod. L3



Grigio Silver  
Cod. 5D



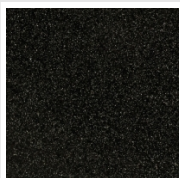
Grigio Perla  
Cod. L6



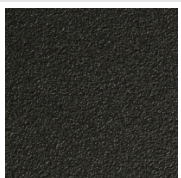
Grigio Alluminio -  
RAL 9006  
Cod. B4



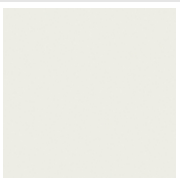
Nero Grafite  
Cod. 18



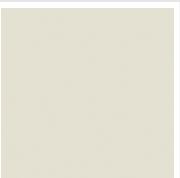
Grigio Quarzo  
Cod. 31



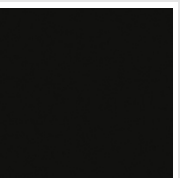
Nero Satinato  
Cod. 30



Luxury White  
Cod. J7



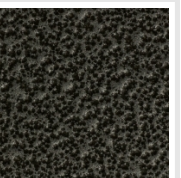
Bianco Opaco  
Cod. J8



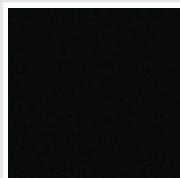
Nero Opaco  
Cod. K1



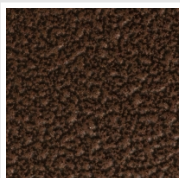
Bronzo  
Cod. J9



Grigio Martellato  
Cod. 32

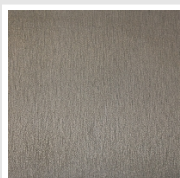


Luxury Black  
Cod. J3



Rame Martellato  
Cod. J4

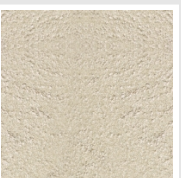
## SURFACES



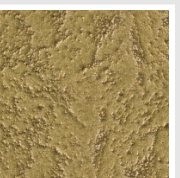
Trattamento Loft  
Cod. TR



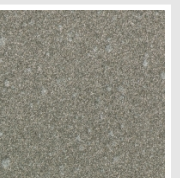
Taftah Argento  
Cod. K4



Taftah Platino  
Cod. K3



Taftah Oro  
Cod. K2



Grey Shadow  
Cod. X6

The Colors used in this folder are not considered binding. The different technological painting processes and the materials used for the realization can not have a perfect color match with the delivered product. Irsap company reserves the right to introduce at any time whatever modifications necessary to the improvement of the product.