



Jazz Elettrico, înălțimea 1290 mm, lățime 600 mm, , Roșu Sunset - RAL 3018

Caracteristici Tehnice

țevi din tablă de oțel dreptunghiulare 25x20 mm
colectoare din tablă de oțel pătrate 30x30 mm
cu lichid termovector inclus
lățime cablului electric: 1.200 mm, dopul Schuko

Standard equipment

4 console pentru fixarea pe perete, de aceeași culoare cu caloriferul
telecomandă Wireless

Certifications



Plus



Date tehnice

Model	Depth (mm)	Height (mm)	Width (mm)	Conn. C. (mm)	Weight (kg)	Electric Power (Watt)
DX						
890 18 țevi 2 spații	67,0	890	500	50	14,80	500
1290 28 țevi 2 spații	67,0	1290	500	50	22,40	750
1770 38 țevi 3 spații	67,0	1770	500	50	30,30	1000
SX						
890 18 țevi 2 spații	67,0	890	500	50	14,80	500
1290 28 țevi 2 spații	67,0	1290	500	50	22,40	750
1770 38 țevi 3 spații	67,0	1770	500	50	30,30	1000

Caloriferul se livrează cu rezistența montată întotdeauna în partea dreaptă.

Standard equipment

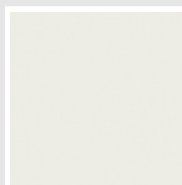
- 4 console pentru fixarea pe perete, de aceeași culoare cu caloriferul
- telecomandă Wireless

Packing

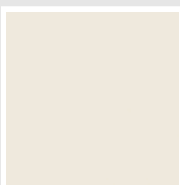
Atenția pe care Irsap o rezervă fiecărui calorifer se manifestă și în grija pentru ambalaj. Fiecare produs este protejat de un material antișoc care previne zgârieturile și deteriorările accidentale pe parcursul transportului sau a manipulării pe șantier. Toate ambalajele trebuie colectate și reciclate conform legislației în vigoare.

Colori e finisaje

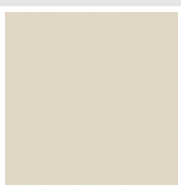
CLASSIC



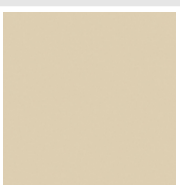
Bianco Edelweiss
Opaco
Cod. 34



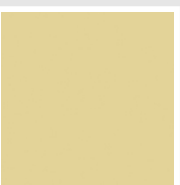
Bianco Whisper
Peach
Cod. 36



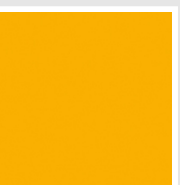
Jasmin Opaco
Cod. 35



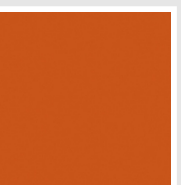
Beige Naturale
Cod. 38



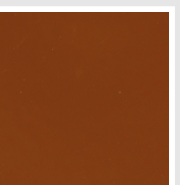
Beige Cream
Cod. 26



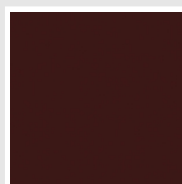
Giallo Melone - RAL
1028
Cod. E7



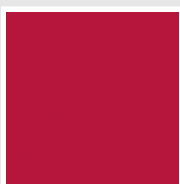
Arancio - RAL 2004
Cod. 17



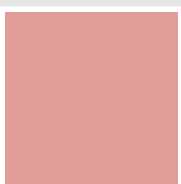
Marrone Ruggine -
RAL 8004
Cod. E1



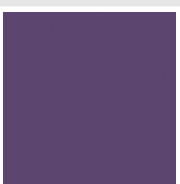
Vinaccia - RAL 3005
Cod. H9



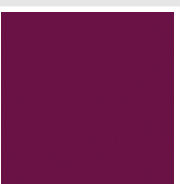
Rosso Fragola - RAL
3018
Cod. Y3



Rosa - RAL 3015
Cod. R2



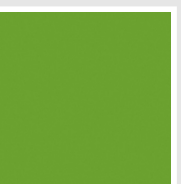
Lilla Bluastro - RAL
4005
Cod. R3



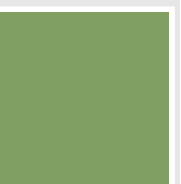
Porpora Traffico -
RAL 4006
Cod. R6



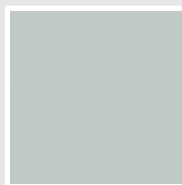
Verde Bosco - RAL
6005
Cod. 19



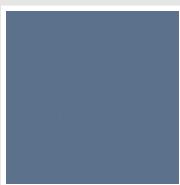
Verde Erba - RAL
6018
Cod. N3



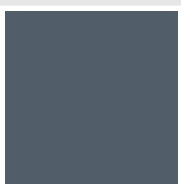
Verde Salvia - RAL
6021
Cod. E6



Verde Greenwich
Cod. 28



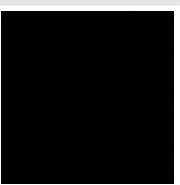
Blu Pastello - RAL
5024
Cod. G7



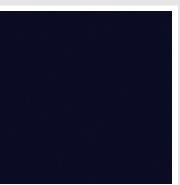
Blu Colomba - RAL
5014
Cod. G9



Blu Hewi
Cod. 11

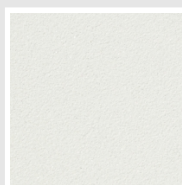


Nero - RAL 9005
Cod. 10

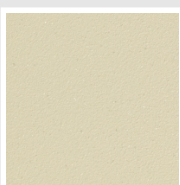


Deep Blue
Cod. 2F

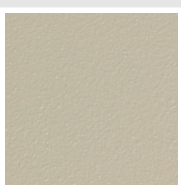
SPECIAL



Bianco Perla
Cod. 16



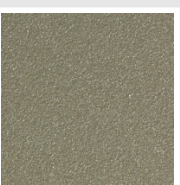
Quartz 1
Cod. 1C



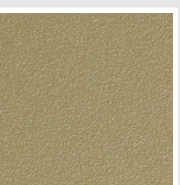
Sablé
Cod. Y4



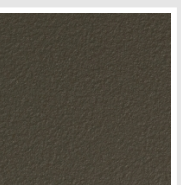
Quartz 2
Cod. 2C



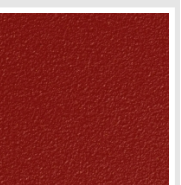
Sunstone
Cod. 2D



Petra
Cod. 3D



Bruno Tabacco
Cod. 1B



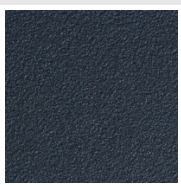
Flame Red
Cod. 7D



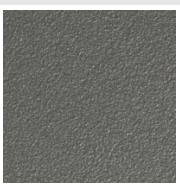
Purple Blue
Cod. 1D



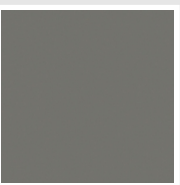
Azurite
Cod. 6D



Azurite 3
Cod. 6C



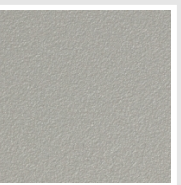
Grigio Medio
Cod. 4D



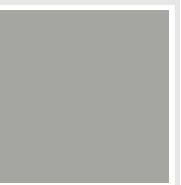
Grigio Titanio
Metallizzato - RAL
9023
Cod. L3



Grigio Silver
Cod. 5D



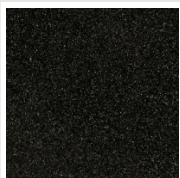
Grigio Perla
Cod. L6



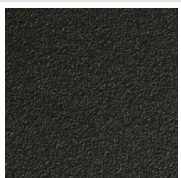
Grigio Alluminio -
RAL 9006
Cod. B4



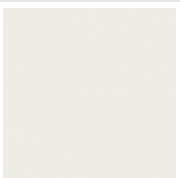
Nero Grafite
Cod. 18



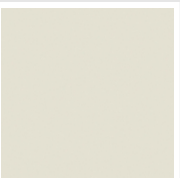
Grigio Quarzo
Cod. 31



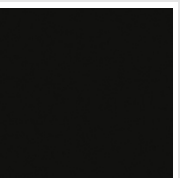
Nero Satinato
Cod. 30



Luxury White
Cod. J7



Bianco Opaco
Cod. J8



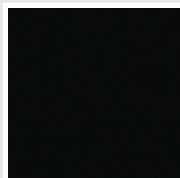
Nero Opaco
Cod. K1



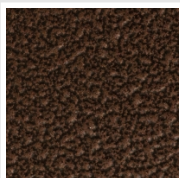
Bronzo
Cod. J9



Grigio Martellato
Cod. 32

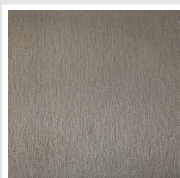


Luxury Black
Cod. J3



Rame Martellato
Cod. J4

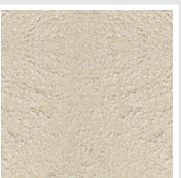
SURFACES



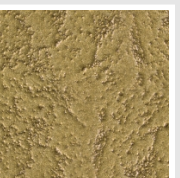
Trattamento Loft
Cod. TR



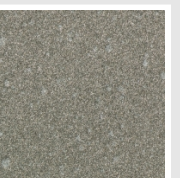
Taftah Argento
Cod. K4



Taftah Platino
Cod. K3



Taftah Oro
Cod. K2



Grey Shadow
Cod. X6

The Colors used in this folder are not considered binding. The different technological painting processes and the materials used for the realization can not have a perfect color match with the delivered product. Irsap company reserves the right to introduce at any time whatever modifications necessary to the improvement of the product.